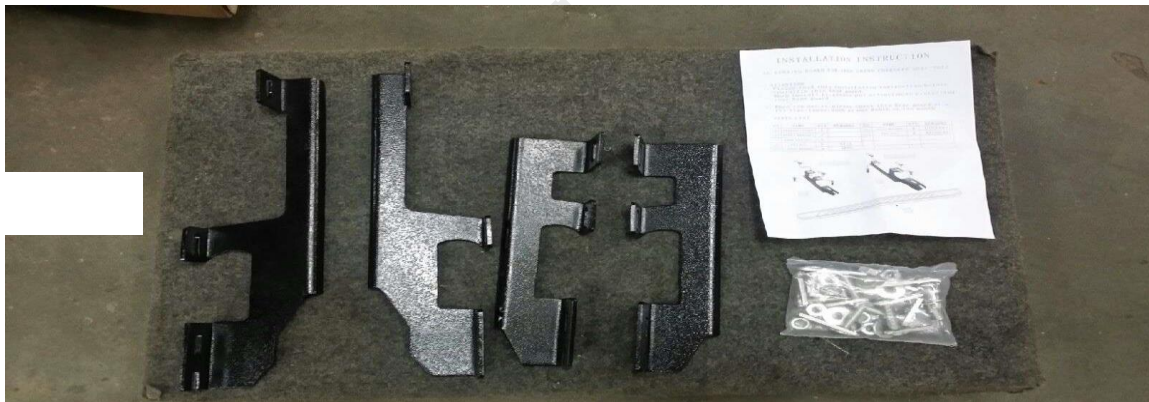


INSTALLATION INSTRUCTIONS

2011-2020
JEEP GRAND CHEROKEE

PARTS LIST:

Qty	Hardware	Qty	Hardware for the bar
4	Mounting Brackets	1	A Sealed bag of hardware

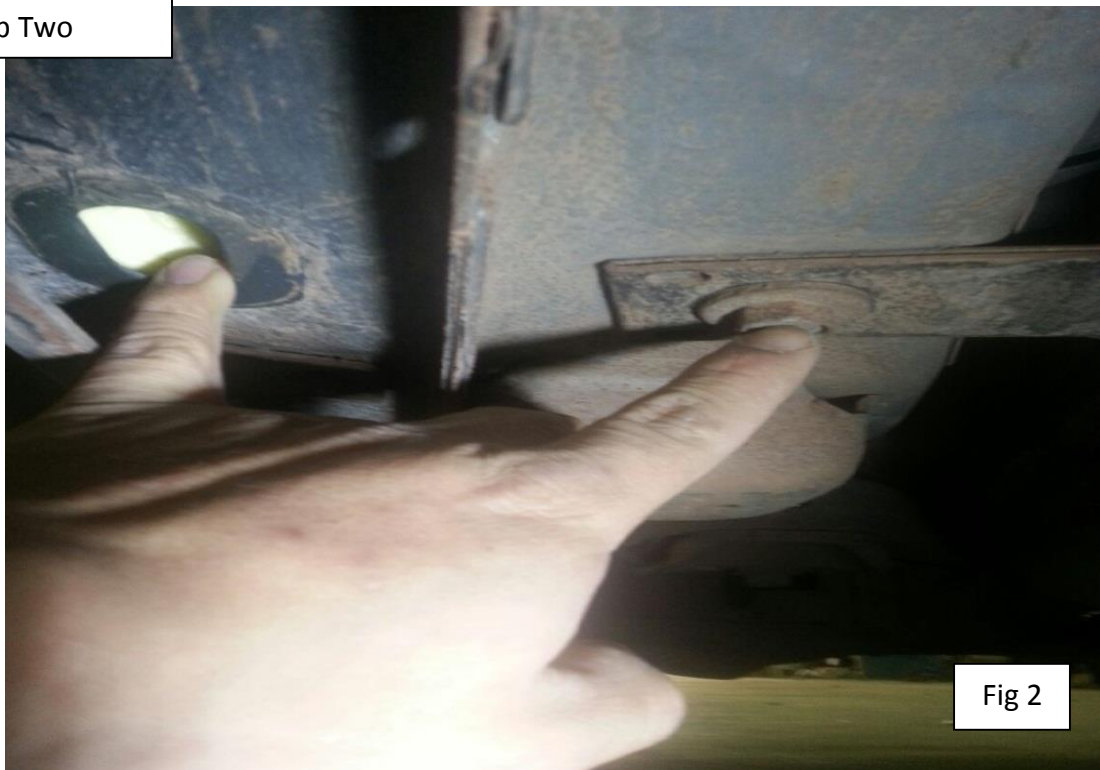


Step One



REMOVE RUBBER GROMIT FROM THE REAR PASSANGER AND DRIVER SIDE.

Step Two



REMOVE FACTORY SCREW LOCATED OPOSITE OF RUBBER GROMIT.

Step Three



Fig 3

MOUNT UP REAR BRACKET USING THE DROP IN SCREW. REUSE THE FACTORY SCREW TO MOUNT THE REAR SIDE OF THE BRACKET. USE FLAT WASHER LOCK WASHER AND NUT FOR THE FRONT DROP IN. WE INCLUDE SPACERS FOR ANY ADJUSTMENTS.

Step Four

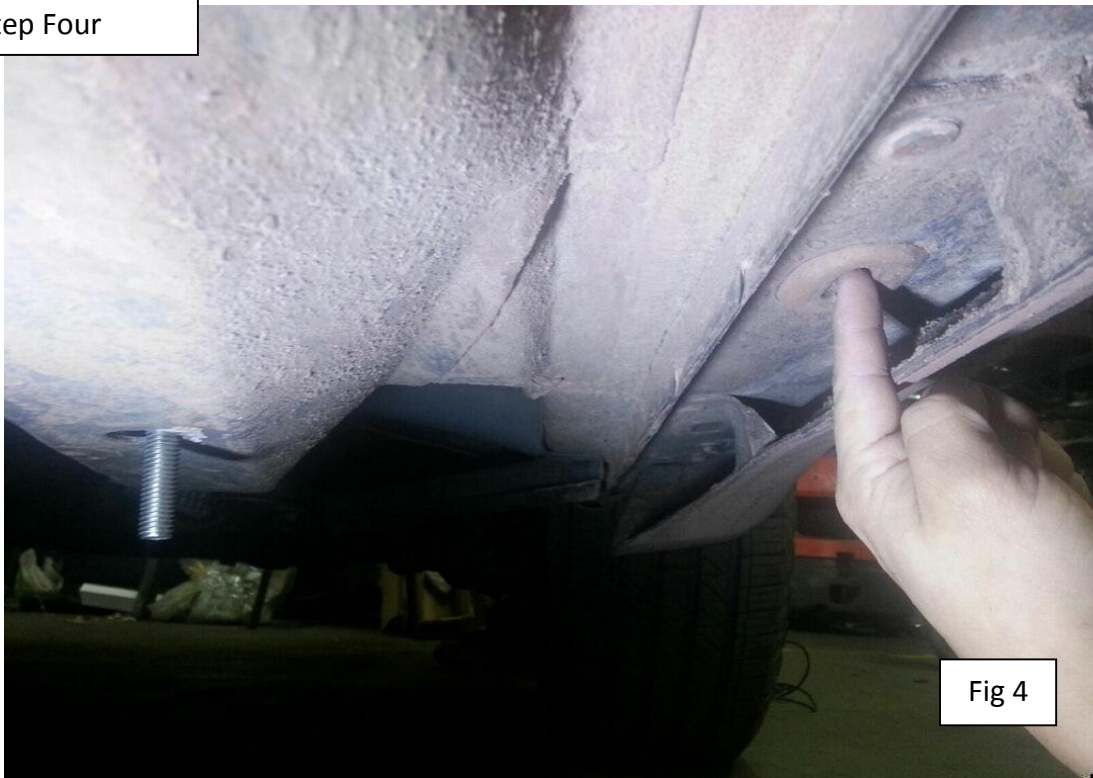


Fig 4

**THIS EXAMPLE SHOWS HOW TO MOUNT BOTH FRONT BRACKETS.
AS YOU DID FOR THE REAR LOCATE THE RUBBER GROMMET AND REMOVE IT.**

Step Five



Fig 5

**INSERT ANOTHER DROP IN FOR THE FRONT SUPPORT. AND USE ANOTHER
DROP IN FOR THE REAR SUPPORT. USE THE FACTORY OPEN HOLE FOR THE
REAR DROP IN.**

Step Six



Fig 6

**MOUNT FRONT BRACKET. USE FLAT WASHER, LOCK WASHER AND NUT FOR
BOTH. USE EXTRA SPACERS IF NECESSARY IF YOU NEED TO MAKE**

LOOSEN THE NUTS THAT ARE LOCATED UNDERNEATH THE RUNNING BOARDS, AND POSITION BOARD IN PLACE/ ADJUST TO YOUR NEEDS AND TIGHTEN.

LOOSEN THE NUTS THAT ARE LOCATED UNDERNEATH THE RUNNING BOARDS, AND POSITION BOARD IN PLACE/ ADJUST TO YOUR NEEDS AND TIGHTEN. ENJOY YOUR RUNNING BOARDS!