

INSTALLATION INSTRUCTIONS

Part No. VGBGG-1032SS

Fits: TOYOTA RAV4 GRILLE GUARD 2013-15

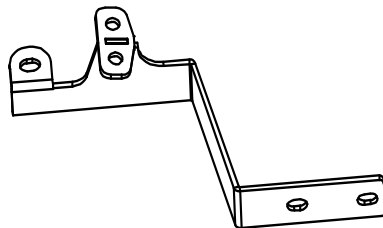
PARTS LIST

Qty	Part Description	Qty	Part Description
1	GRILLE GUARD	8	12mm Flat Washers
1	Passenger/Right Mounting Bracket	4	12mm Lock Washers
1	Driver/Left Mounting Bracket	4	12mm Nuts
1	Driver/Left Upper Brace Bracket	2	10mm x 25 mm Head Hex Bolts
1	Passenger/Right Upper Brace Bracket	6	10mm Flat Washers
2	10mm T-Bolt	4	10mm Lock Washers
4	12mm x 30 mm Head Hex Bolts	4	10 mm Nuts

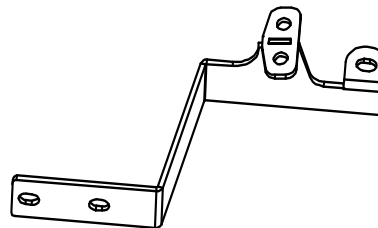
Install Time : 30 – 60 Minutes
(Professional Installation)

Install Note :

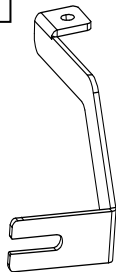
Passenger/Right
Mounting Bracket



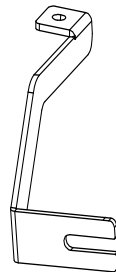
Driver/Left
Mounting Bracket



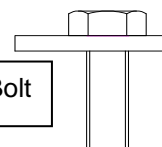
Passenger/Right
Upper Brace Bracket



Driver/Left Upper Brace
Bracket



10mm T-Bolt



**REMOVE CONTENTS FROM BOX. VERIFY ALL PARTS ARE PRESENT
READ INSTRUCTIONS CAREFULLY BEFORE STARTING INSTALLATION**

INSTALLATION PROCEDURE :

STEP 1: Check the parts in the box carefully if match above list .

STEP 2: Pls prepare the tools for installation, follow as: 17-19 wrench

STEP 3: Put the Upper Brace Bracket into the girder of the car, and tighten it with the (2) 10mm T-Bolt, (2) 10mm Flat Washers, (2) 10mm Lock Washers and (2) 10mm Nuts .(Fig1)

STEP 4: Put the mount bracket into the girder of the car, and tighten it with the **Factory Bolts.**(Fig3)

STEP 5: Install grille guard on the mount bracket, and tighten it with the (4) 12mm Head Hex Bolts, (8) 12mm Flat Washers, (4) 12mm Lock Washers and (4) 12mm Nuts .(Fig4)

STEP 6: Installation is finished.(Fig5)

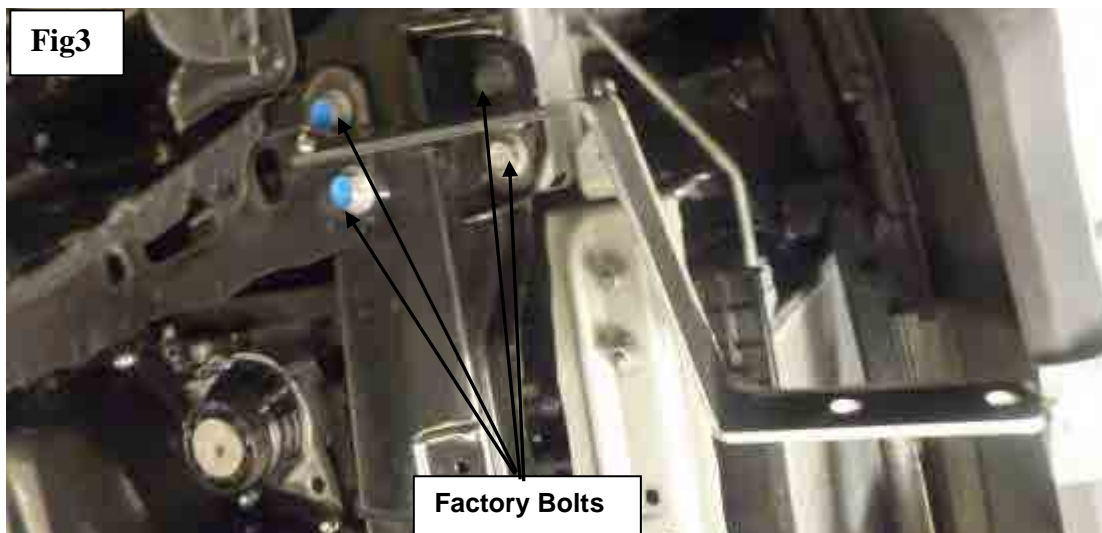
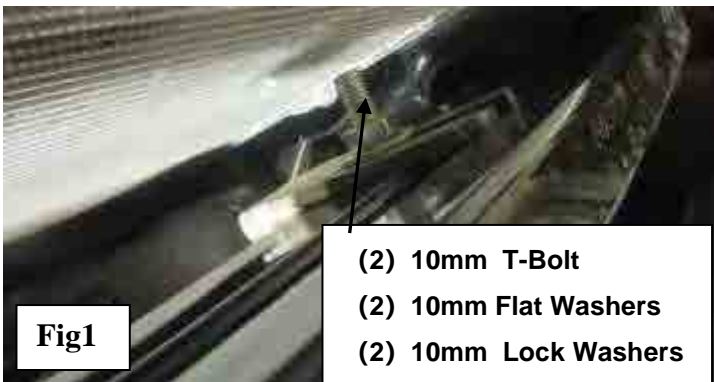


Fig4



- (4) 12mm Head Hex Bolts
- (8) 12mm Flat Washers
- (4) 12mm Lock Washers

Fig5



Do periodic inspections to the installation to make sure that all hardware is secure and tight.

To protect your investment, wax this product after installing. Regular waxing is recommended to add a protective layer over the finish. Do not use any type of polish or wax that may contain abrasives that could damage the finish.

For stainless steel: Aluminum polish may be used to polish small scratches and scuffs on the finish. Mild soap may be used also to clean the Sidebar.

For gloss black finishes: Mild soap may be used to clean the Sidebar.